

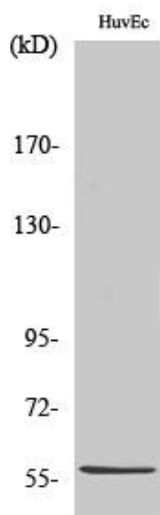


CCDC4 Polyclonal Antibody

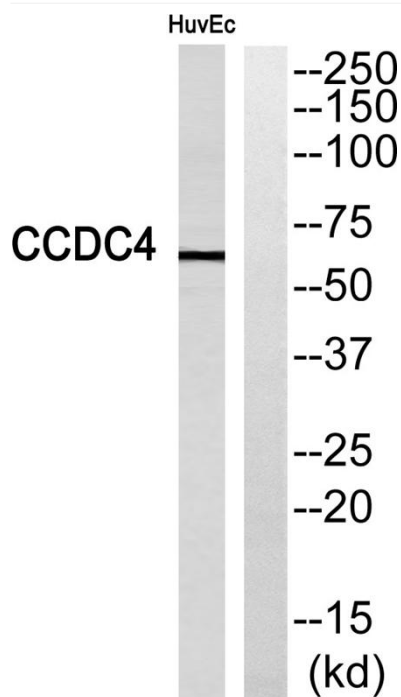
Catalog No	YP-Ab-01597
Isotype	IgG
Reactivity	Human;Rat;Mouse;
Applications	WB;ELISA
Gene Name	BEND4
Protein Name	BEN domain-containing protein 4
Immunogen	The antiserum was produced against synthesized peptide derived from human BEND4. AA range:371-420
Specificity	CCDC4 Polyclonal Antibody detects endogenous levels of CCDC4 protein.
Formulation	Liquid in PBS containing 50% glycerol, 0.5% BSA and 0.02% sodium azide.
Source	Polyclonal, Rabbit,IgG
Purification	The antibody was affinity-purified from rabbit antiserum by affinity-chromatography using epitope-specific immunogen.
Dilution	Western Blot: 1/500 - 1/2000. ELISA: 1/40000. Not yet tested in other applications.
Concentration	1 mg/ml
Purity	≥90%
Storage Stability	-20°C/1 year
Synonyms	BEND4; CCDC4; BEN domain-containing protein 4; Coiled-coil domain-containing protein 4
Observed Band	57kD
Cell Pathway	
Tissue Specificity	Prostatic carcinoma,Testis,
Function	PTM:Phosphorylated upon DNA damage, probably by ATM or ATR.,similarity:Contains 1 BEN domain.,
Background	PTM:Phosphorylated upon DNA damage, probably by ATM or ATR.,similarity:Contains 1 BEN domain.,
matters needing attention	Avoid repeated freezing and thawing!
Usage suggestions	This product can be used in immunological reaction related experiments. For more information, please consult technical personnel.



Products Images



Western Blot analysis of various cells using CCDC4 Polyclonal Antibody



Western blot analysis of BEND4 Antibody. The lane on the right is blocked with the BEND4 peptide.